

TL38.70HF

TELESCOPIC LOADERS

AGRI 



One Tough Animal

TL38.70HF – SPECIFICATIONS

Performance

Lifting height — on tyres	6973.0 mm
Rated capacity	3800 kg
Capacity (at max. height on tyres)	3500 kg
Capacity (at max. reach on tyres)	1500 kg
Max. reach on tyres	4002.0 mm

Weights

Weight (unladen)	7580 kg
------------------	---------

Traction

Standard tyres	Alliance tyres - set of 4 x 460/70R24" A580
1st gear / low range	6.0 km/h
1st gear / high range	18.0 km/h
2nd gear / low range	12.0 km/h
2nd gear / high range	40.0 km/h

Drive System

Transmission	Hydrostatic with electronic regulation
Main drive	Hydrostatic motor + 2 speed gearbox

Engine

Make / Model	Bobcat D34
Fuel	Diesel
Coolant	Coolant
Rated power (ISO 14396:2002) at 2400 RPM	130.0 HP
Rated power (ISO 14396:2002) at 2400 RPM	97.0 kW
Maximum torque at 1400 RPM	500.0 Nm
Number of cylinders	4
Displacement	3.40 L

Hydraulic System

Pump type	LS piston pump
Pump capacity	190.00 L/min
Relief valve pressure setting	255.00 bar

Cycle Times

Lift time - no load	4.9 s
Lower time - no load	4.3 s
Telescope in time at max. reach - no load	4.8 s
Telescope in time at max. height - no load	4.8 s
Telescope out time at max. reach - no load	4.9 s
Telescope out time at max. height - no load	4.7 s

Brakes

Engine braking	Hydrostatic
Parking and emergency brake	Passive brake

Fluid Capacities

Fuel tank	138.00 L
Hydraulic reservoir	59.00 L

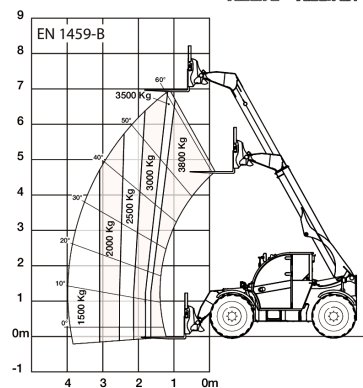
Environmental

Operator noise level (LpA) (EN 12053)	77 dB(A)
Level of acoustic power (LWA)	107 dB(A)
Whole body vibration (EN 13059)	1.20 ms ⁻²

(-) 900.0 mm	(L) 1356.0 mm
(A) 6074.0 mm	(M) 2870.0 mm
(B) 4869.0 mm	(N) 643.0 mm
(C) 4763.0 mm	(O) 1013.0 mm
(D) 4145.0 mm	(P) 1895.0 mm
(E) 2561.0 mm	(Q) 2300.0 mm
(F) 2374.0 mm	(R) 4925.0 mm
(G) 135.0°	(S) 5015.0 mm
(I) 1752.0 mm	(T) 3714.0 mm
(J) 346.0 mm	(U) 1092.0 mm

Load Charts

With forks on 24 inch tyres



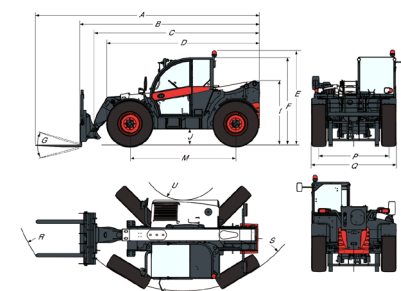
99258 G7

72961 23

Options

Air conditioning	Manitou carriage with manual attachment lock
Boom stop	Blue lights for henhouses
Custom colour	Boom suspension
Fire extinguisher	Forward/Reverse control on joystick and steering wheel
Forward/Reverse control on Steering Wheel Lever (no longer on joystick)	Rear auxiliary line
Protective grill for windshield (front and roof)	Rotating tow hitch with height adjustment (auto-lock/German style) (including rear electric socket)
Wheel wedge	Rotating tow hitch with height adjustment (manual locking) (including rear electric socket)
Keyless ignition (start/stop with keypad)	Tool box
Quicktack carriage with hydraulic attachment lock (boom wiring harness mandatory)	Hydraulic pick-up tow hitch (including rear electric socket) (rear flat mirror mandatory)
Standard engine ignition (with key) with additional keypad security	Michelin tyres - set of 4 x 500/70R24" XMCL (AGRICULTURAL) (Except overseas countries - Container shipping)
Manitou carriage with hydraulic attachment lock (boom wiring harness mandatory)	

Dimensions



Bobcat is a Doosan Company. Doosan is a global leader in construction equipment, power & water solutions, engines, and engineering proudly serving customers and communities for more than a century. Bobcat and the Bobcat logo are registered trademarks of Bobcat Company in the United States and various other countries. ©2020 Bobcat Company. All Rights Reserved.

Certain specifications are based on engineering calculations and are not actual measurements. Specifications are provided for comparison purposes only and are subject to change without notice. Specifications for your individual Bobcat equipment will vary based on normal variations in design, manufacturing, operating conditions, and other factors. Pictures of Bobcat units may show other than standard equipment. Financing options may vary by country and dealer. Always ask your dealer about currently available financing options. Terms and conditions may apply.

